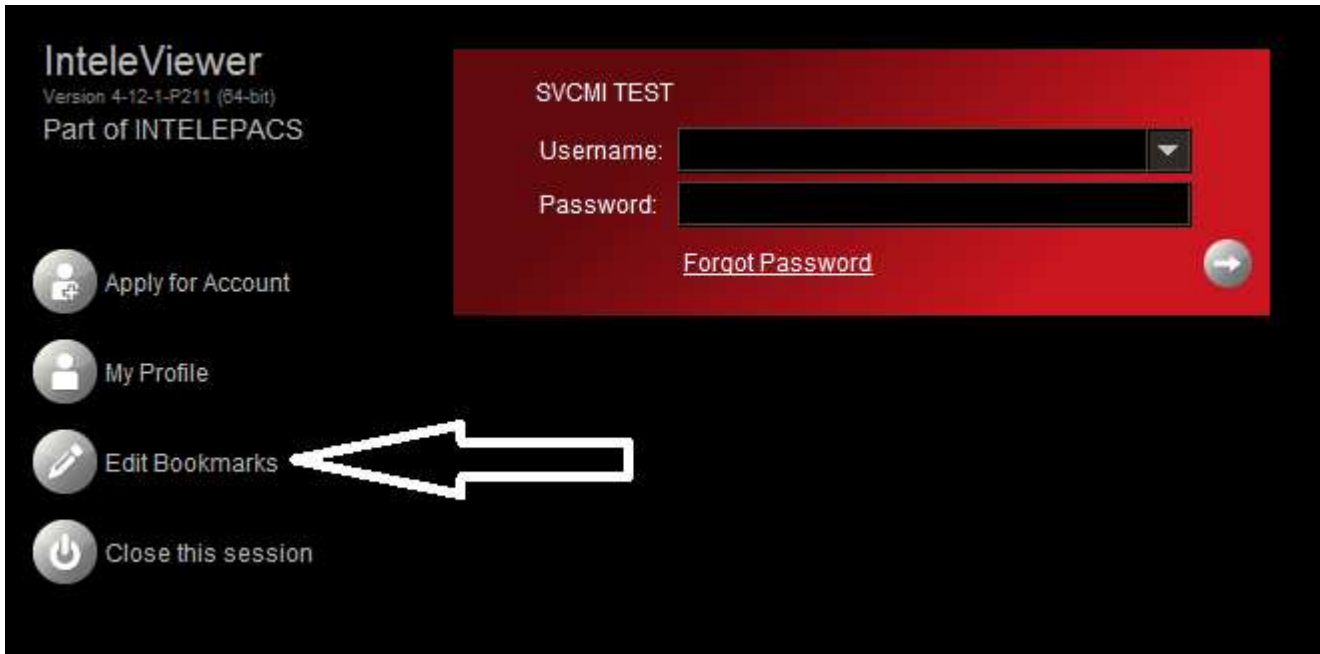


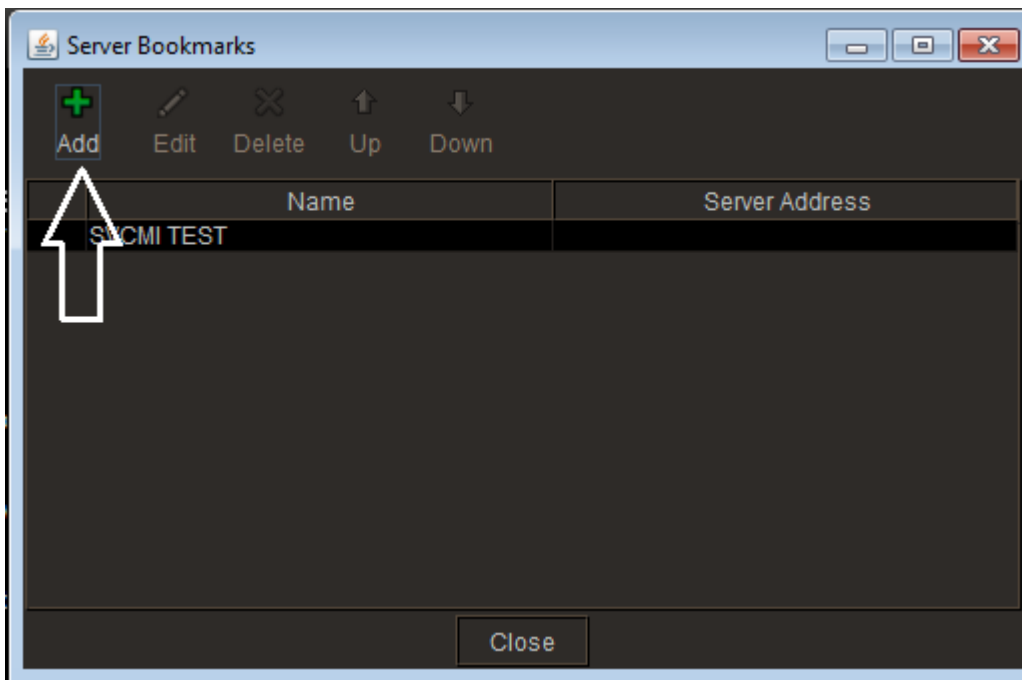


How to add the SVCMI&NM Bookmark to Computers with IntelViewer installed

1. Launch IntelViewer from the desktop shortcut or start programs menu.
2. **Click** the Edit Bookmarks button.

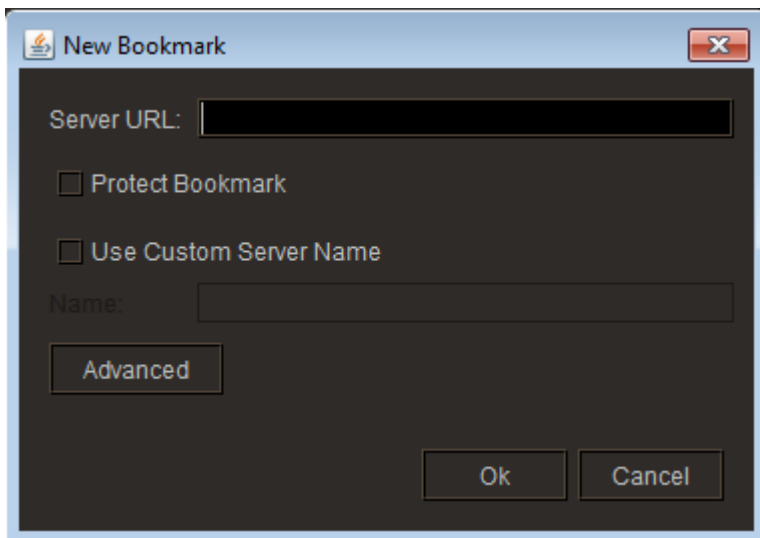


3. The server bookmarks window will open.
4. **Click** the add button.

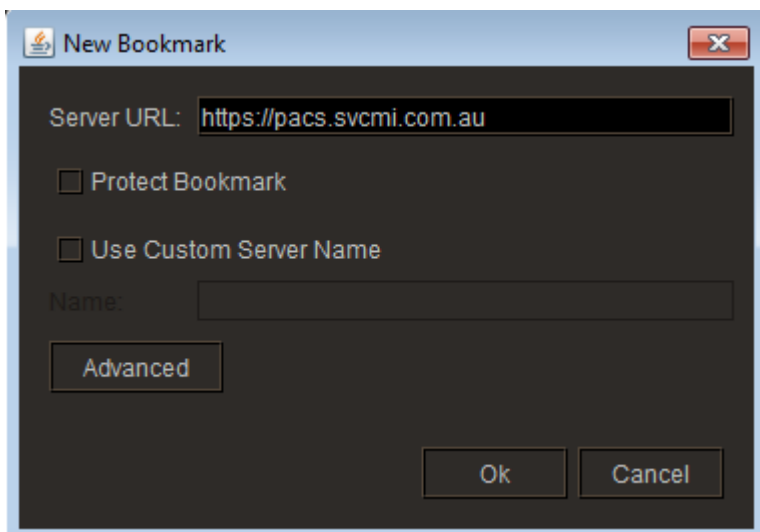


How to add the SVCMI&NM Bookmark to Computers with IntelViewer installed

5. The new bookmark window will open.



6. In the Server URL field, please **type** the following address: <https://pacs.svcmi.com.au>



7. **Click** the OK button.

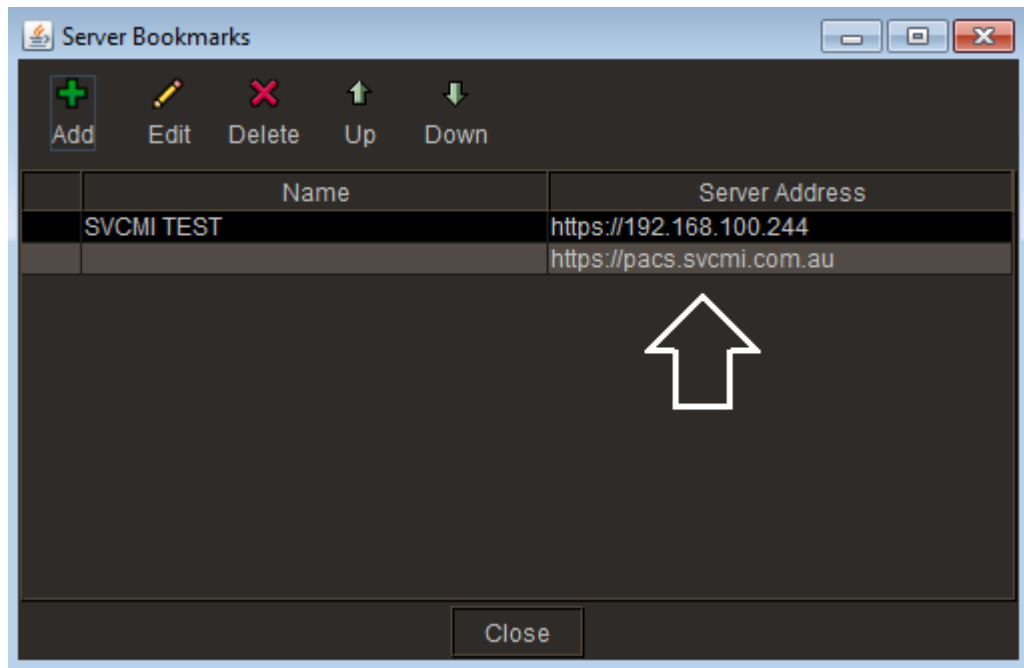
8. IntelViewer will validate the address. Please wait patiently. Note internet access is required for this to work.

9. Once completed, you will see that it is added to the server bookmarks list.

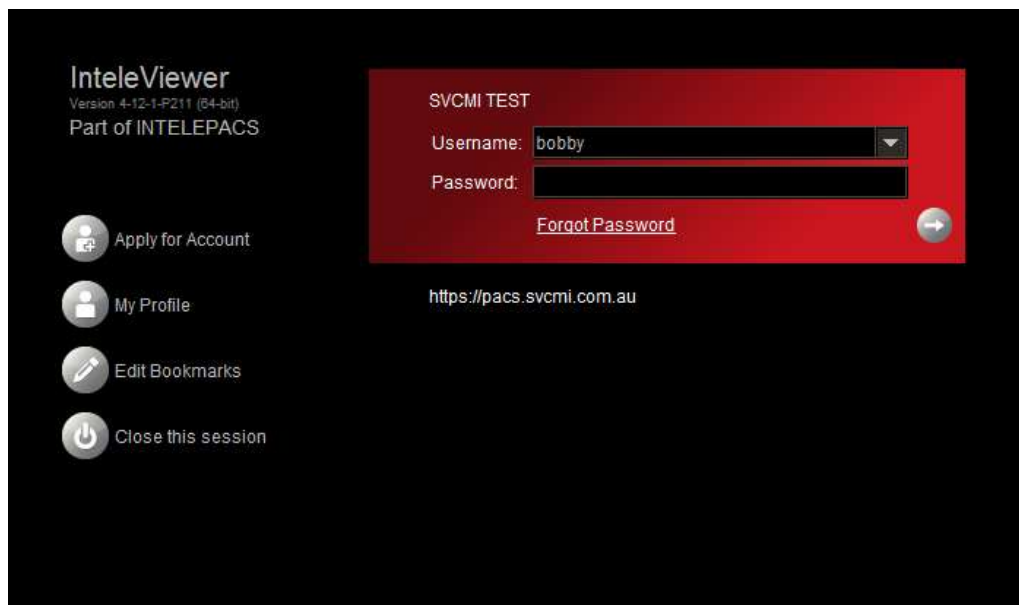


How to add the SVCMI&NM Bookmark to Computers with IntelViewer installed

10. Please click the **Close** button.



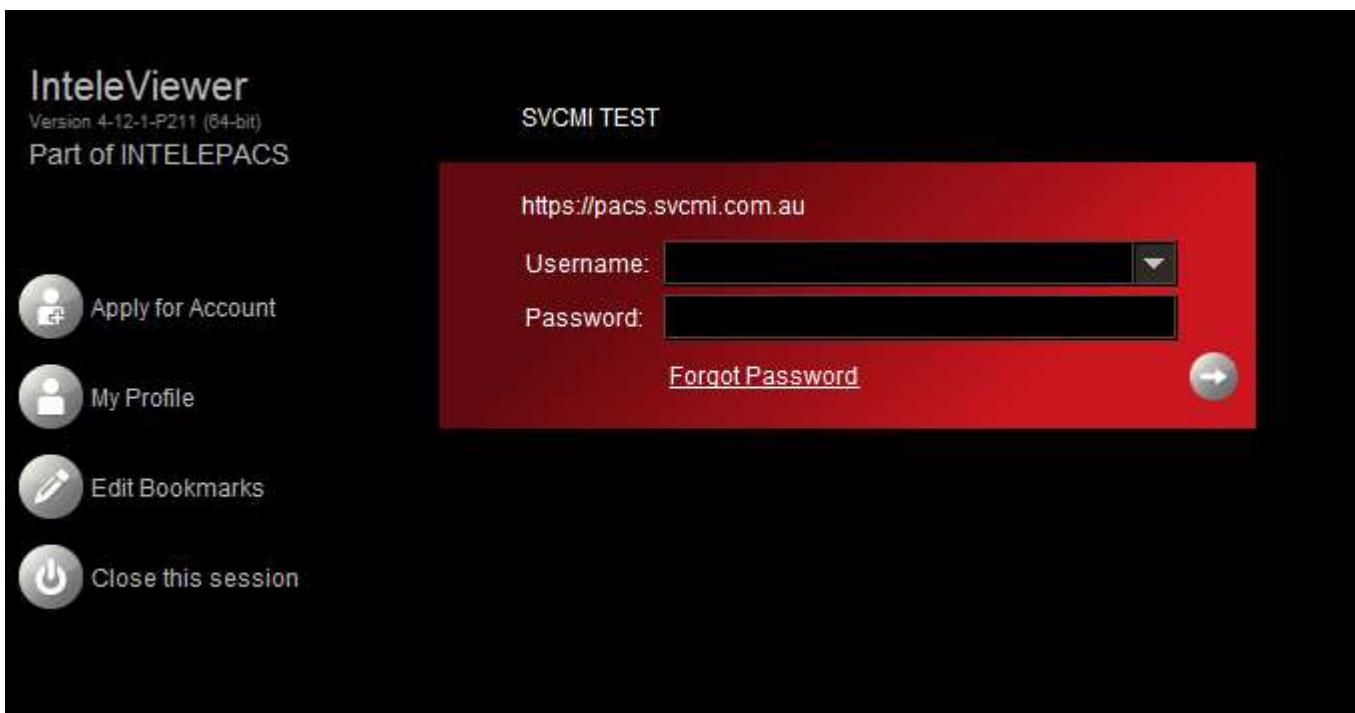
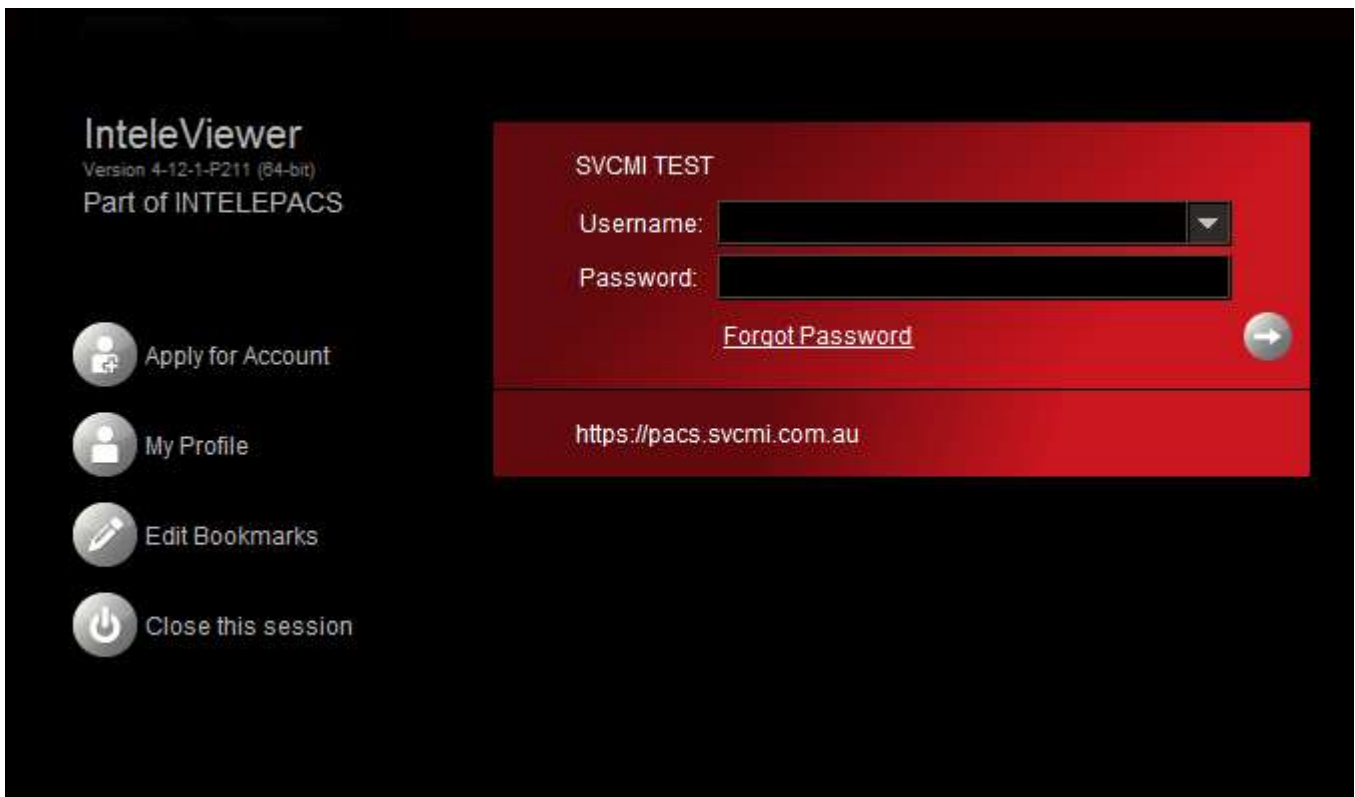
11. You will see the bookmark: <https://pacs.svcmi.com.au> at the bottom of your list.





How to add the SVCMI&NM Bookmark to Computers with IntelViewer installed


12. Click on <https://pacs.svcmi.com.au> to select the new server bookmark.





How to add the SVCMI&NM Bookmark to Computers with IntelViewer installed

13. Please **type** in your username and password and **press ENTER on your**

keyboard or **click** the right pointing arrow button in the IntelViewer window (hint: )



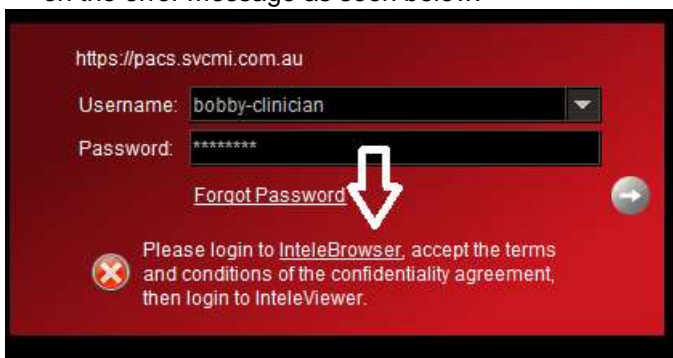
How to add the SVCMI&NM Bookmark to Computers with IntelViewer installed

14. If you enter the correct username and password you receive the following message:
“Please login to **IntelBrowser**, accept the terms and conditions of the confidentiality agreement, and then login to **IntelViewer**”.

Please follow the extra steps below



15. If you haven't accepted the confidentiality agreement you will not be able to proceed. Please click **IntelBrowser** on the error message as seen below.



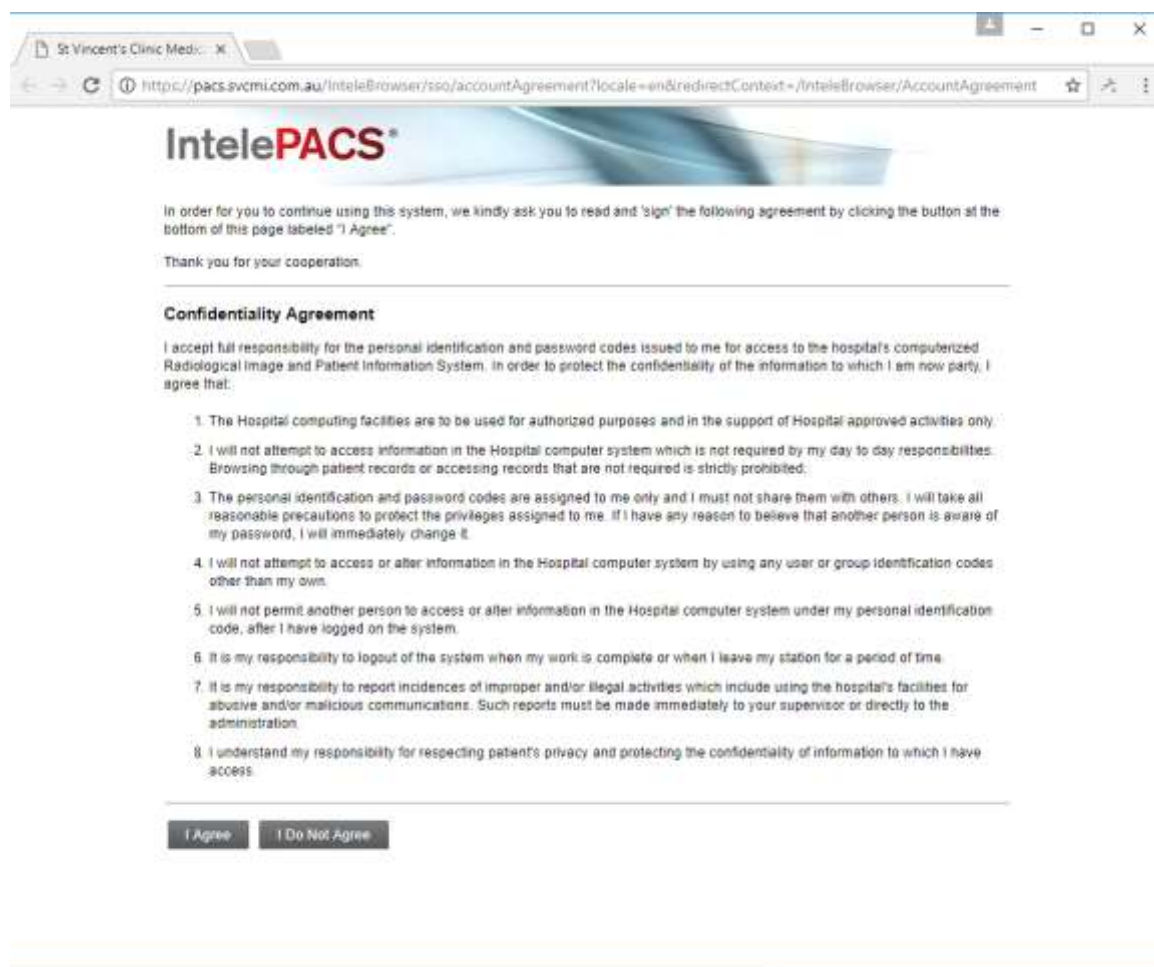
16. Alternatively, if that button doesn't work for some reason, please browse to the URL <https://pacs.svcmi.com.au> via your web browser and enter your IntelViewer login details on that page.



How to add the SVCMI&NM Bookmark to Computers with IntelViewer installed



17. Once the confidentiality agreement page opens, please read the agreement and click the button **I agree**. Please note: If you don't agree, you will have no access to IntelViewer.



18. Once you have agreed, the following page will open. Close this window now and return to IntelViewer.


How to add the SVCMI&NM Bookmark to Computers with IntelViewer installed

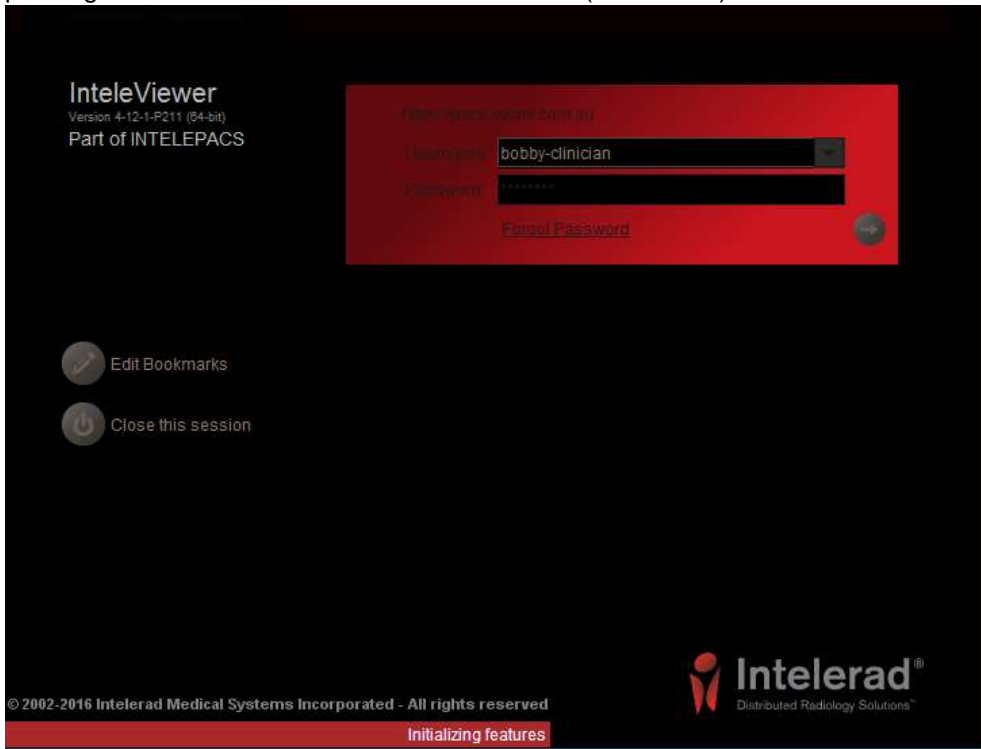


The screenshot shows a web browser window with the URL <https://pacs.svcmi.com.au/intelbrowser/app>. The page title is "St Vincent's Clinic Medical Imaging & Nuclear Medicine". The main heading is "IntelPACS®". On the left, a user menu for "Bobby Stewart (bobby-clinician)" includes links for Dashboard, Patient Search, IntelViewer, My Profile, Installers, Help, and Log Out. The "Patient Search" section contains three search criteria: "Patient ID" with a "Begins" dropdown, "Patient Name" with a "Begins" dropdown and a text input for "Last Name, First Name", and "Accession Number" with a "Begins" dropdown. Below these are filter sections: "Date Filter" with radio buttons for Today, Yesterday, Last 48 hours, Last 7 Days, Last 31 Days, and All Dates (selected), plus a Custom Range option; "Organization Filter" with radio buttons for One Organization (selected), Multiple Organizations, and All Organizations; and "Modality Filter" with checkboxes for CR, CT, DX, Mammo, MR, NM, RF, and US. At the bottom of the search area are "Search" and "Reset" buttons.

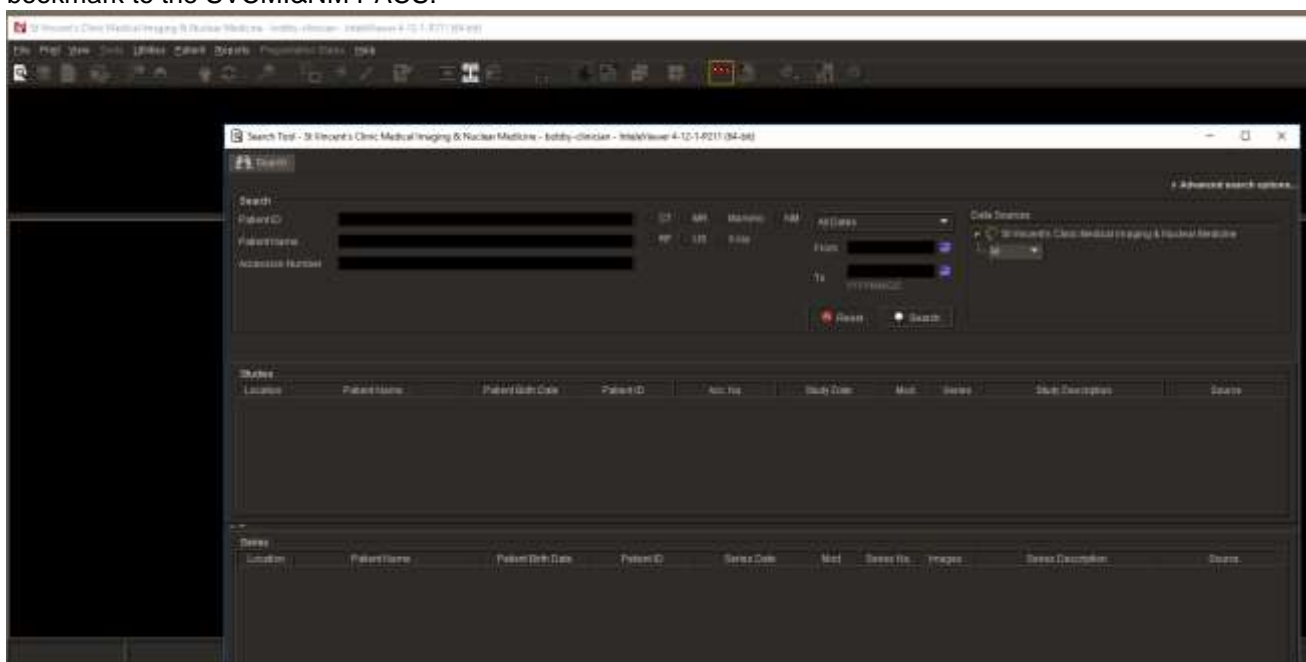


How to add the SVCMI&NM Bookmark to Computers with IntelViewer installed

19. Please **type** in your username and password again and **press ENTER on your keyboard** or **click** the right pointing arrow button in the IntelViewer window (hint: ). IntelViewer will now log on with your credentials.



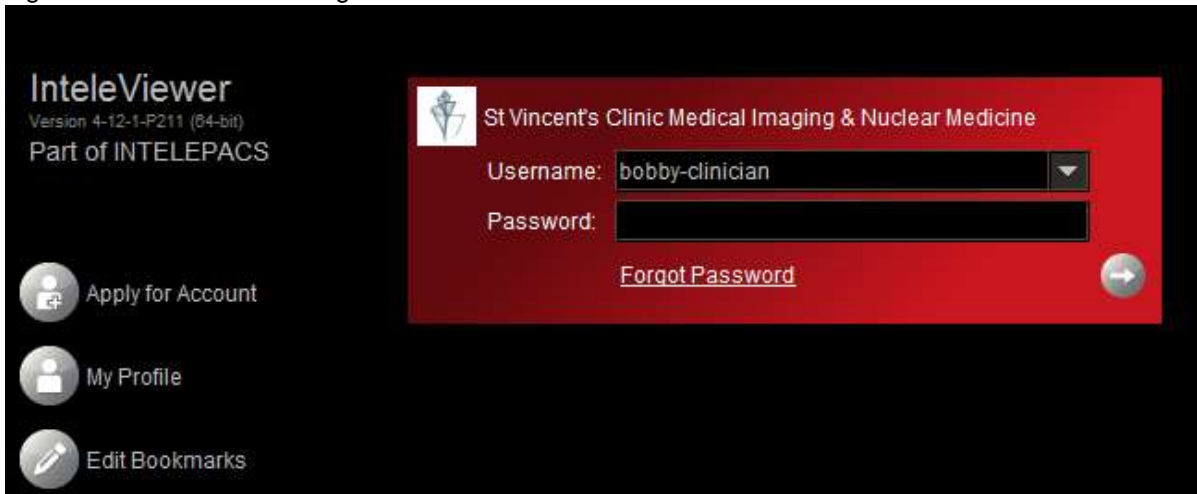
20. Once you have logged in, the following windows will open. That concludes this guide on how to configure the bookmark to the SVCMI&NM PACS.





How to add the SVCMI&NM Bookmark to Computers with IntelViewer installed

Next time you open the IntelViewer client, you will notice the bookmark has updated with the SVCMI&NM bookmark logo and the name will change as well.



URLs for referrers:

- SVCMI&NM IntelPACS URL
<https://pacs.svcmi.com.au>
- SVCMI&NM ZedLink URL
<https://zedlink.svcmi.com.au>
- SVCMI&NM website
<https://www.svcmi.com.au>